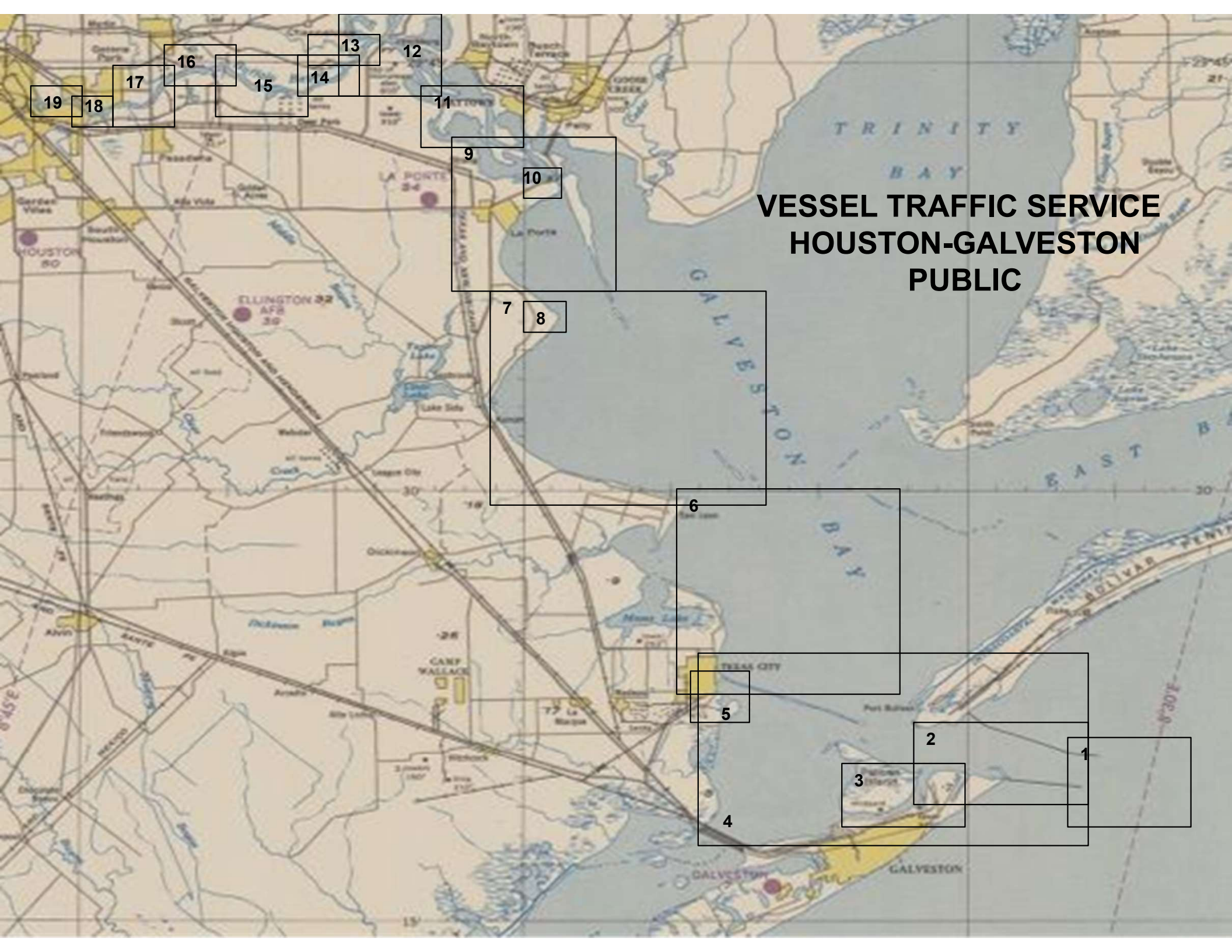
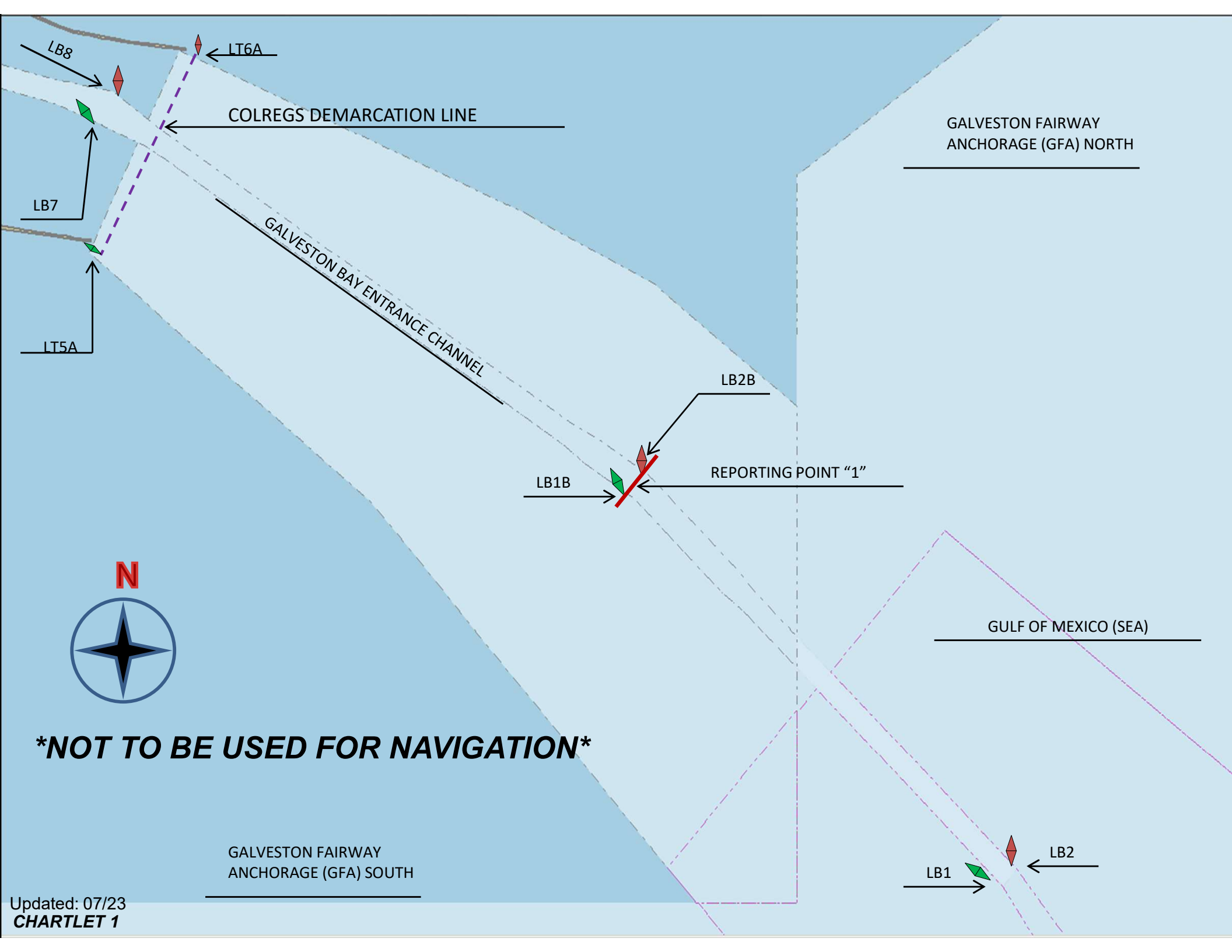


VESSEL TRAFFIC SERVICE HOUSTON-GALVESTON PUBLIC





LB8

← LT6A

COLREGS DEMARCATION LINE

GALVESTON FAIRWAY ANCHORAGE (GFA) NORTH

LB7

GALVESTON BAY ENTRANCE CHANNEL

LT5A

LB2B

LB1B

REPORTING POINT "1"

N



GULF OF MEXICO (SEA)

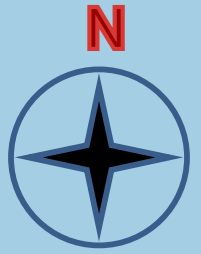
NOT TO BE USED FOR NAVIGATION

GALVESTON FAIRWAY ANCHORAGE (GFA) SOUTH

← LB2

LB1 →

NOT TO BE USED FOR NAVIGATION



NORTH JETTY

LB18

ANCHORAGE "C"
16' DRAFT- 48HRS

ANCHORAGE "B"
48HRS

ANCHORAGE "A"
22' DRAFT- 48HRS

BOLIVAR ROADS
CHANNEL

LB "P"

LB16

INNER BAR CHANNEL

LB12

REPORTING POINT "2"

LB10

OUTER BAR CHANNEL

LB8

LB 11

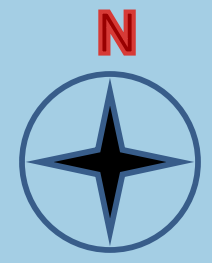
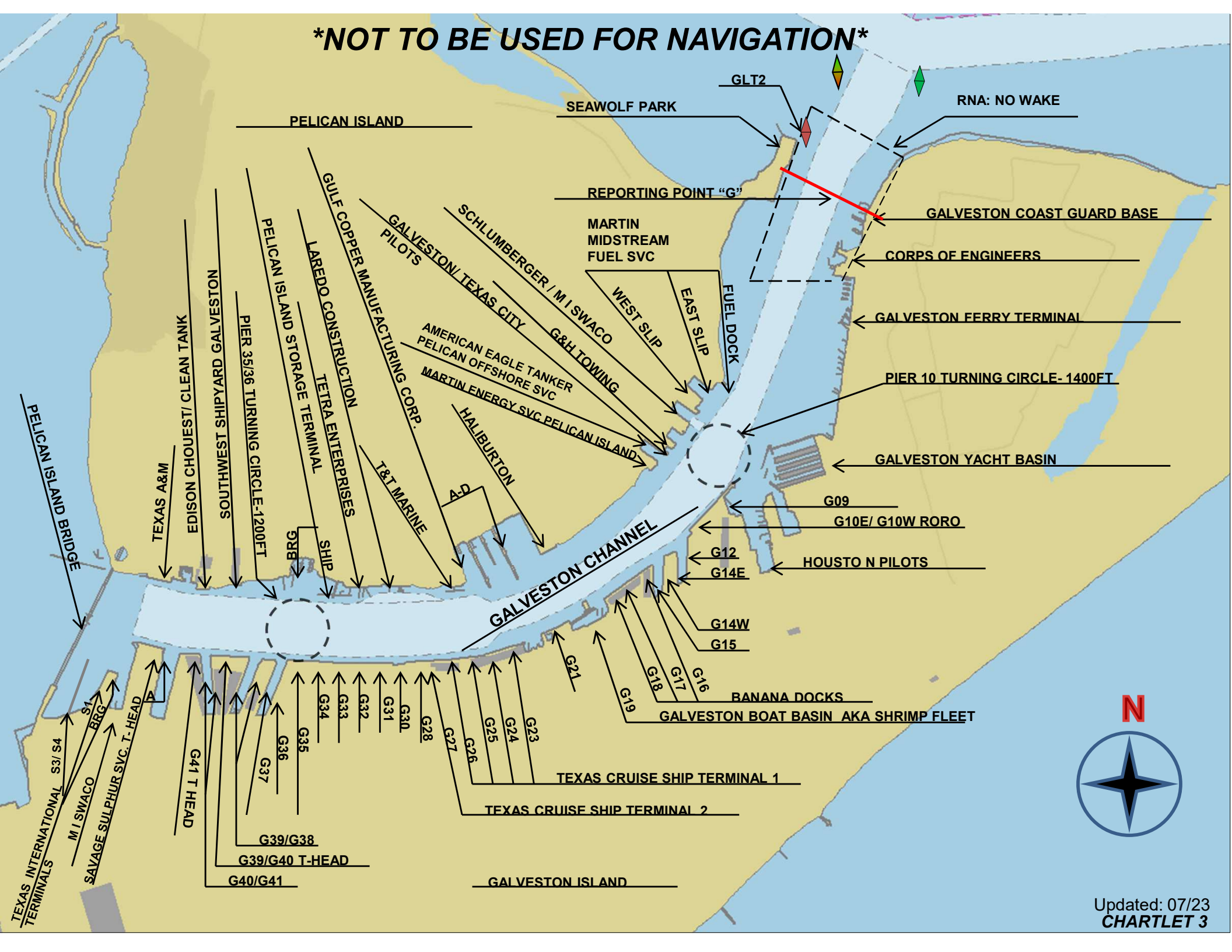
LB9

GALVESTON LB1

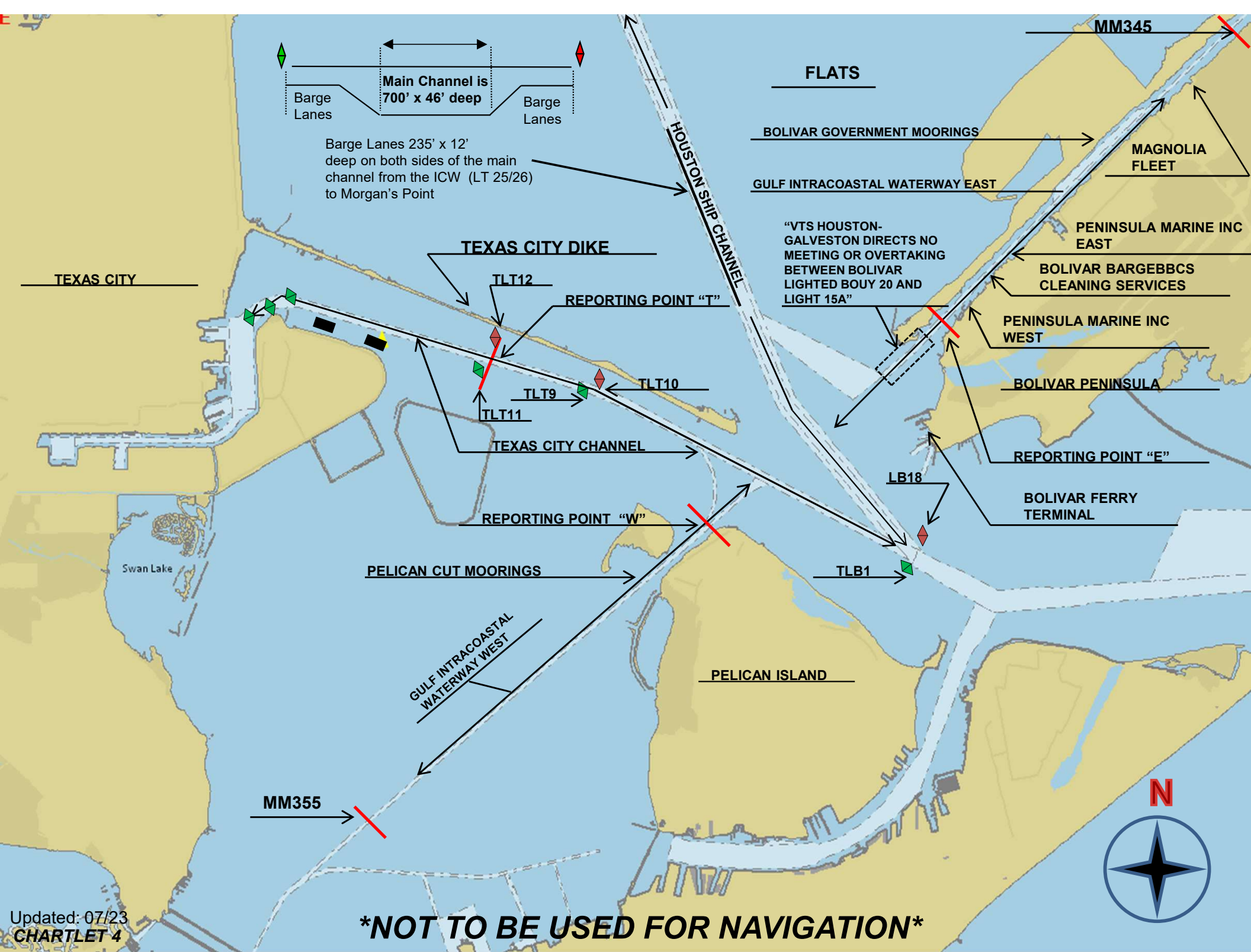
LB7

SOUTH JETTY

NOT TO BE USED FOR NAVIGATION



Updated: 07/23
CHARTLET 3



Main Channel is 700' x 46' deep

Barge Lanes

Barge Lanes 235' x 12' deep on both sides of the main channel from the ICW (LT 25/26) to Morgan's Point

TEXAS CITY DIKE

TLT12

REPORTING POINT "T"

TLT9

TLT10

TLT11

TEXAS CITY CHANNEL

REPORTING POINT "W"

PELICAN CUT MOORINGS

GULF INTRACOASTAL WATERWAY WEST

MM355

FLATS

BOLIVAR GOVERNMENT MOORINGS

GULF INTRACOASTAL WATERWAY EAST

"VTS HOUSTON-GALVESTON DIRECTS NO MEETING OR OVERTAKING BETWEEN BOLIVAR LIGHTED BOUY 20 AND LIGHT 15A"

PENINSULA MARINE INC EAST

BOLIVAR BARGEBCS CLEANING SERVICES

PENINSULA MARINE INC WEST

BOLIVAR PENINSULA

REPORTING POINT "E"

BOLIVAR FERRY TERMINAL

LB18

TLB1

MM345

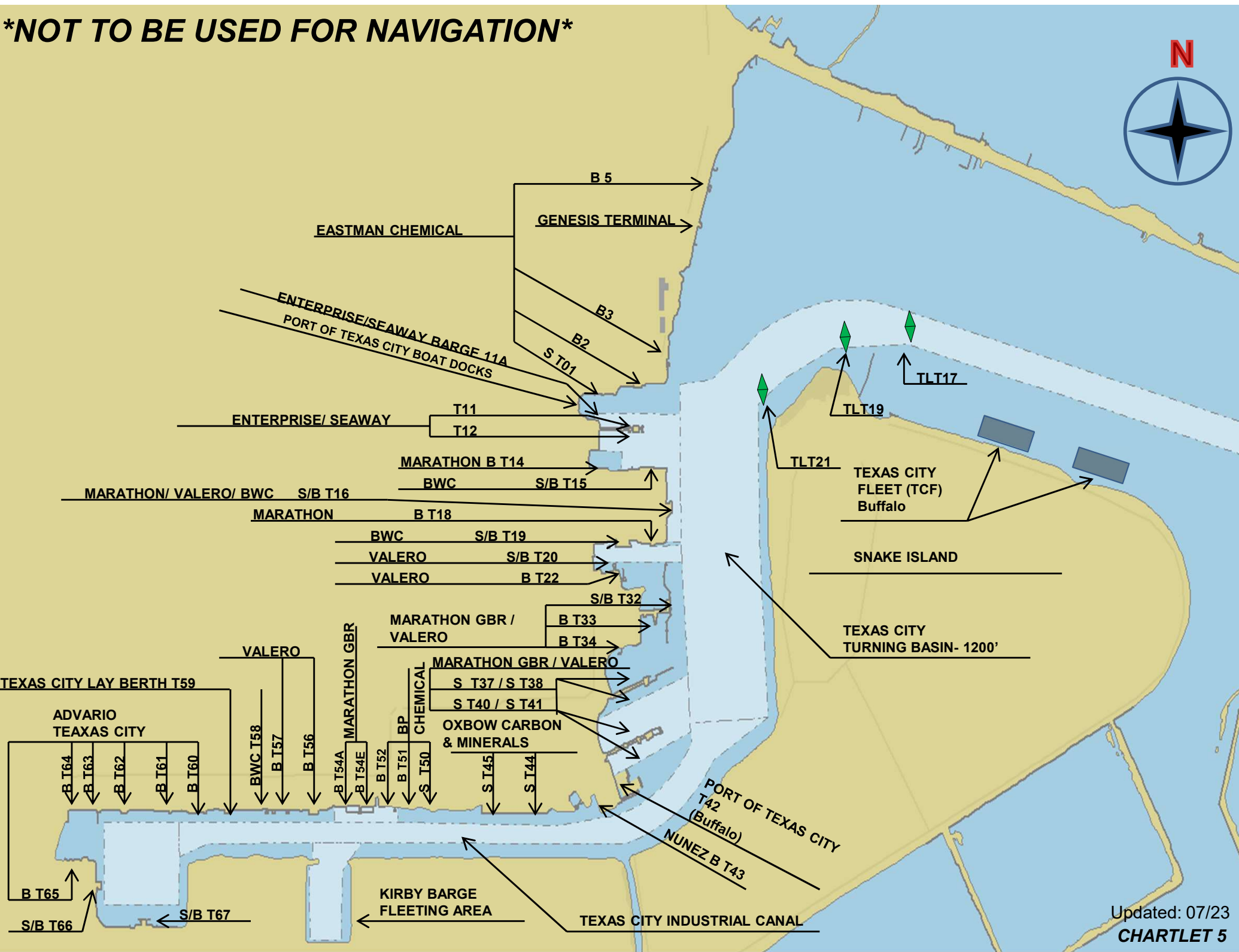
PELICAN ISLAND

N

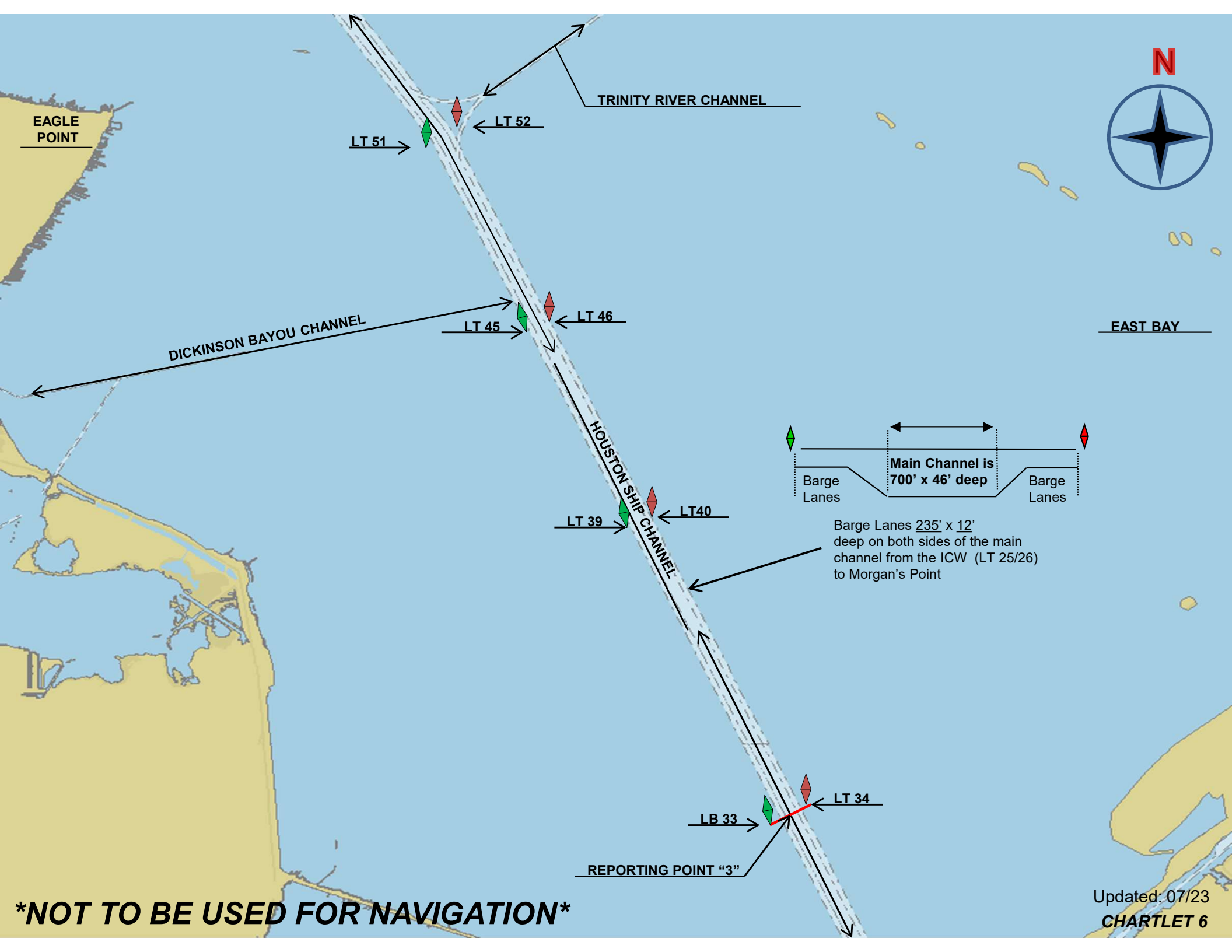


NOT TO BE USED FOR NAVIGATION

NOT TO BE USED FOR NAVIGATION



Updated: 07/23
CHARTLET 5



N



EAGLE POINT

TRINITY RIVER CHANNEL

LT 51

LT 52

DICKINSON BAYOU CHANNEL

LT 45

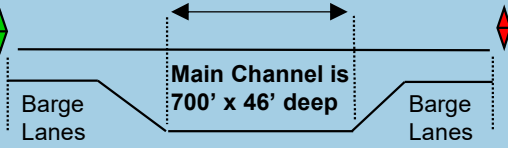
LT 46

EAST BAY

HOUSTON SHIP CHANNEL

LT 39

LT 40



Barge Lanes 235' x 12' deep on both sides of the main channel from the ICW (LT 25/26) to Morgan's Point

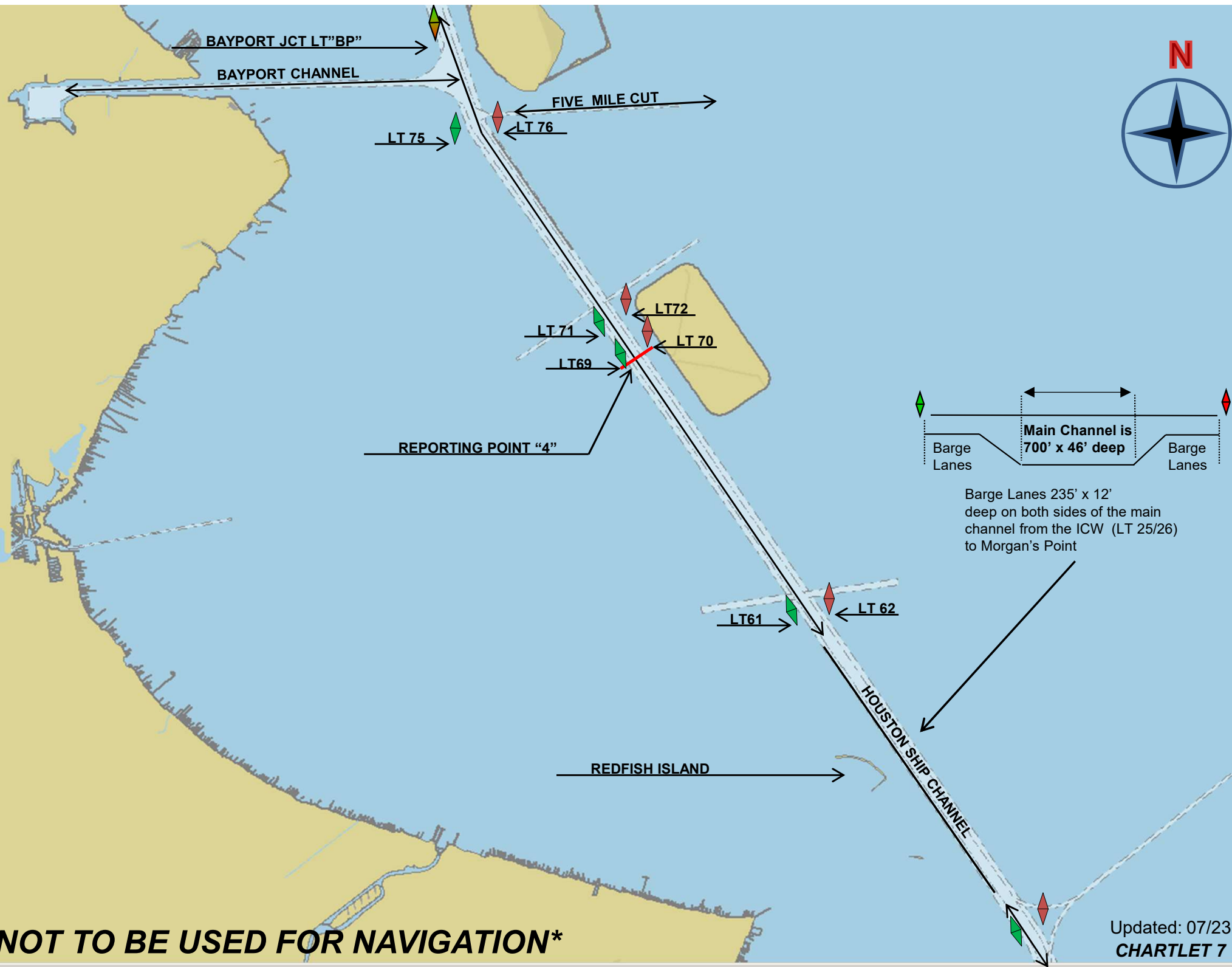
LB 33

LT 34

REPORTING POINT "3"

NOT TO BE USED FOR NAVIGATION

Updated: 07/23
CHARTLET 6



NOT TO BE USED FOR NAVIGATION

Updated: 07/23
CHARTLET 7



BAYPORT

SAN JACINTO COLLEGE

HOUSTON YACHT CLUB

REPORTING POINT "P"

G&H TOWING BAYPORT

BPLT 8

BAYPORT CHANNEL

BPLT 9

LBC HOUSTON

BAYPORT TURN BASIN 1600'

BCT 7

BCT 6

BCT 5

BCT 4

BCT 3

BCT 2

BCT 1

BAYPORT CONTAINER TERMINAL

BRO1

BRO2

BRO3

BAYPORT AUTOMOBILE TERMINAL- RORO

B2

B1

S1

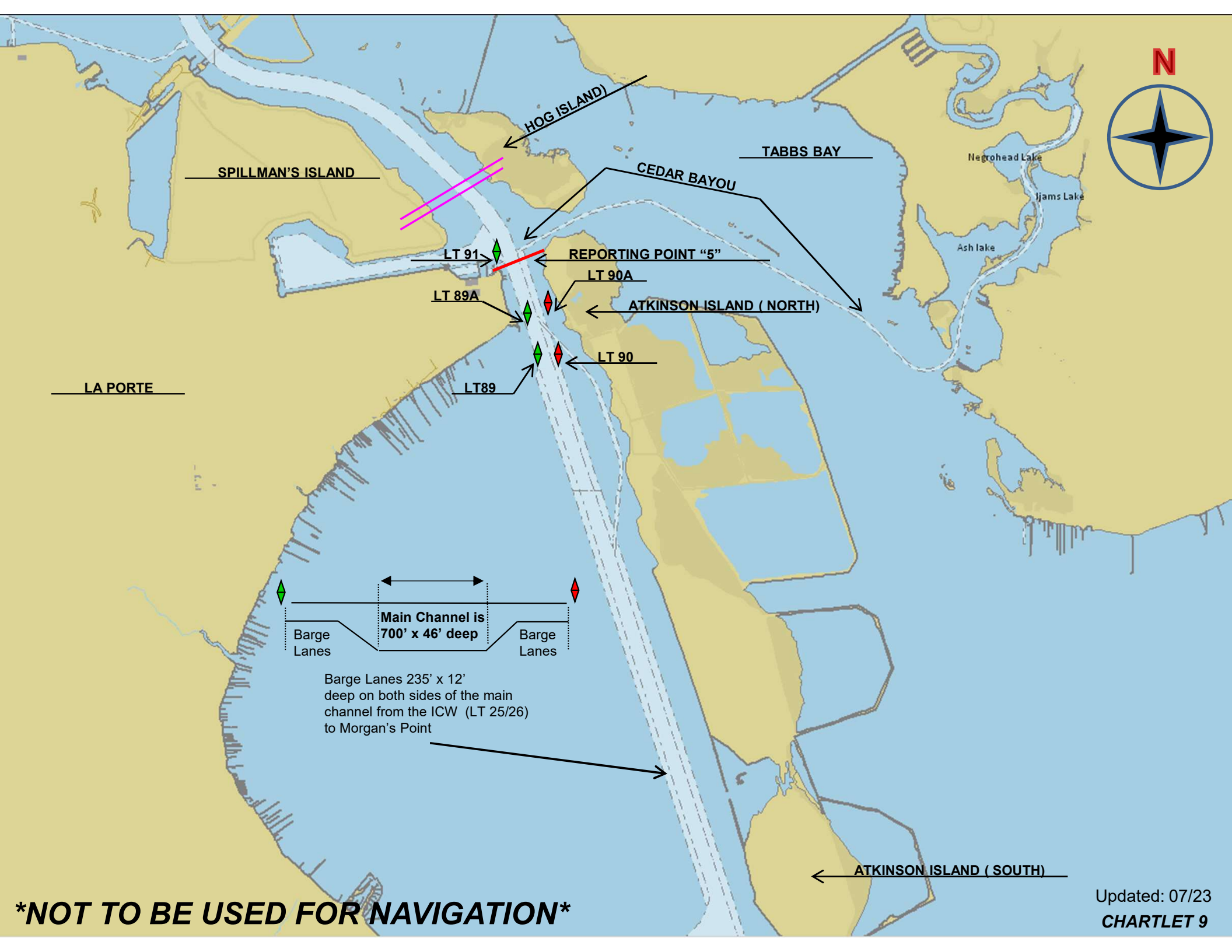
S1

S2

B1

B2

ODFJELL



N



SPILLMAN'S ISLAND

HOG ISLAND

TABBS BAY

Negrohead Lake

Jjams Lake

Ash Lake

CEDAR BAYOU

LT 91

REPORTING POINT "5"

LT 90A

LT 89A

ATKINSON ISLAND (NORTH)

LT 90

LT89

LA PORTE

Barge Lanes

Main Channel is 700' x 46' deep

Barge Lanes

Barge Lanes 235' x 12' deep on both sides of the main channel from the ICW (LT 25/26) to Morgan's Point

ATKINSON ISLAND (SOUTH)

NOT TO BE USED FOR NAVIGATION

Updated: 07/23
CHARTLET 9



SPILLMAN'S ISLAND

MORGAN'S POINT HIGHLINES 197'

LT 95

LT 96

LT 94

LT 93

ENTERPRISE PRODUCTS BARBOUR'S CUT TERMINAL

BARBOUR'S CUT JCT LT"BC"

REPORTING POINT "5"

LT 91

LT 92

FIREBOATS 2&3

BARBOUR'S CUT
TURN BASIN 1900'

BARBOUR'S CUT (BARB)

LASH DOCK

CONTAINER DOCK 6

CONTAINER DOCK 5

CONTAINER DOCK 4

CONTAINER DOCK 3

CONTAINER DOCK 2

CONTAINER DOCK 1

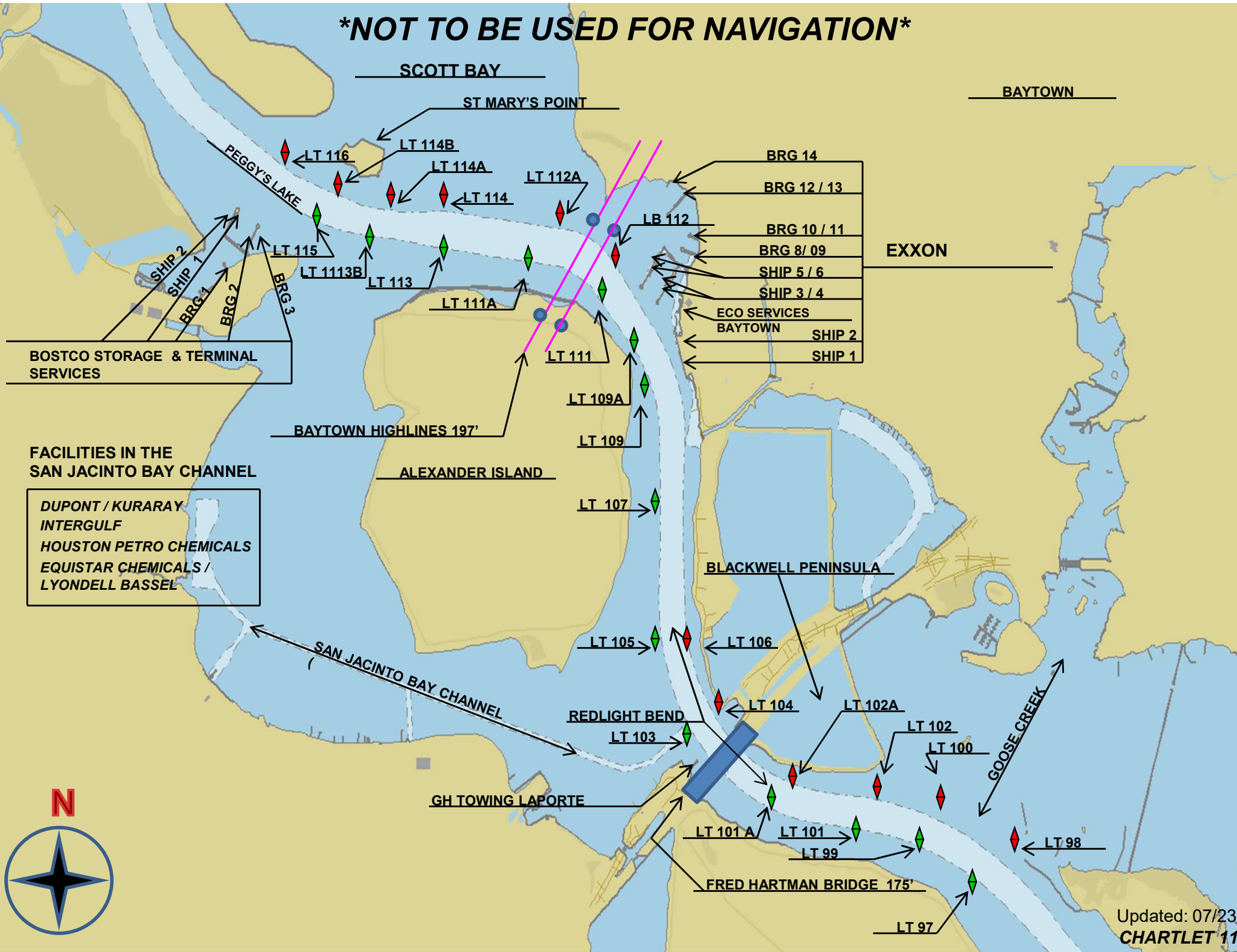
BARBOUR'S CUT CONTAINER TERMINAL

MORGAN'S POINT

Updated: 07/23
CHARTLET 10

NOT TO BE USED FOR NAVIGATION

NOT TO BE USED FOR NAVIGATION

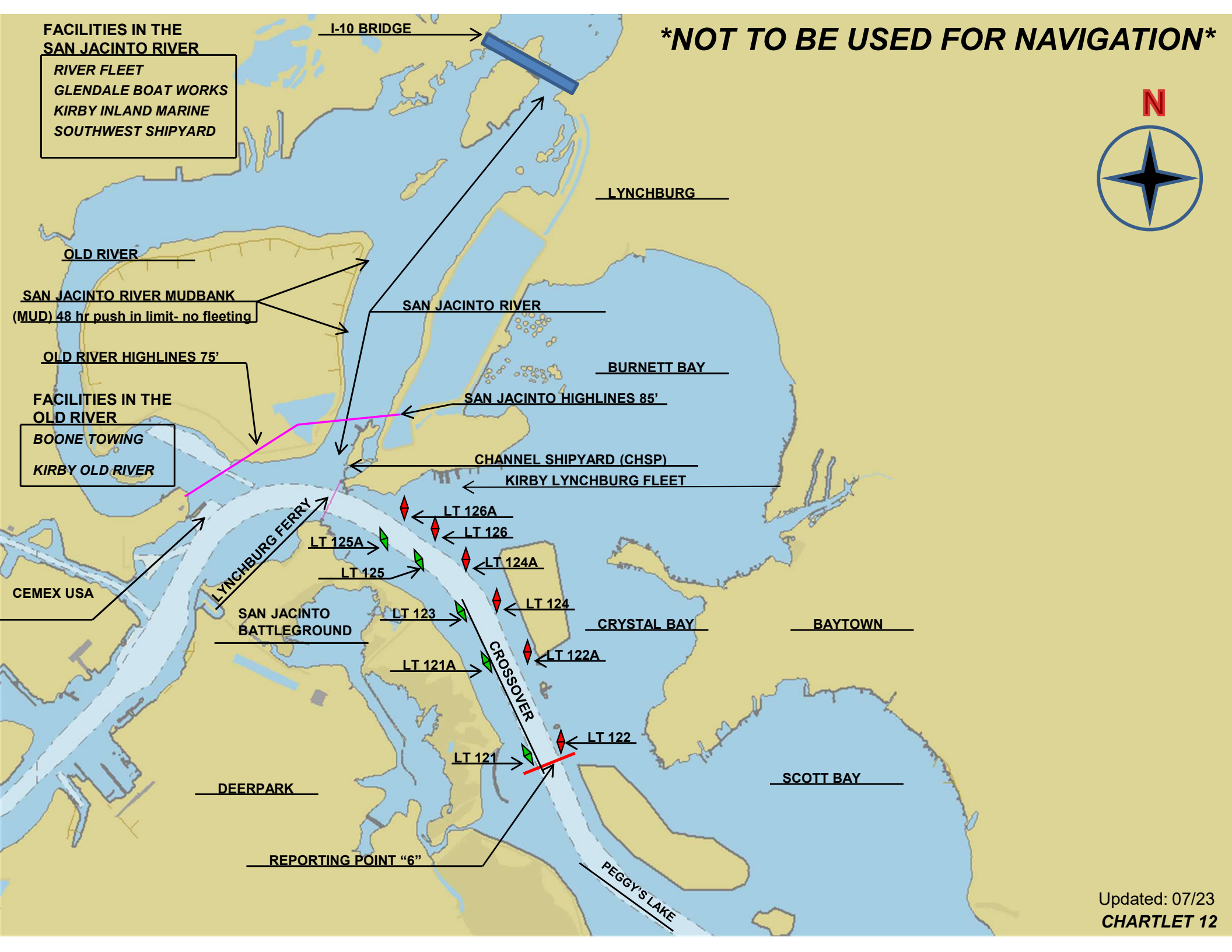


Updated: 07/23
CHARTLET 11

FACILITIES IN THE SAN JACINTO RIVER

- RIVER FLEET
- GLENDALE BOAT WORKS
- KIRBY INLAND MARINE
- SOUTHWEST SHIPYARD

NOT TO BE USED FOR NAVIGATION





HIGMAN/MARYLAND MARINE SERVICES

STOLT BARGE SERVICES

BOASSO AMERICA

KIRBY, CARPENTER'S

TURBOFAB

TARGA CHANNEL VIEW

HOUSTON FLEET

DEZAVALA FLEET

PATTERSON BARGE SERVICES

T-REX ENGINEERING & CONSTRUCTION

CARPENTER'S BAYOU

POWELL INDUSTRIES

KIRBY CLEANING FACILITY

BRG 6

BRG 7

BRG 8

HOUSTON FUEL & OIL

TECHNIP UMBILICALS

MONUMENTAL CHEMICAL

NOT TO BE USED FOR NAVIGATION

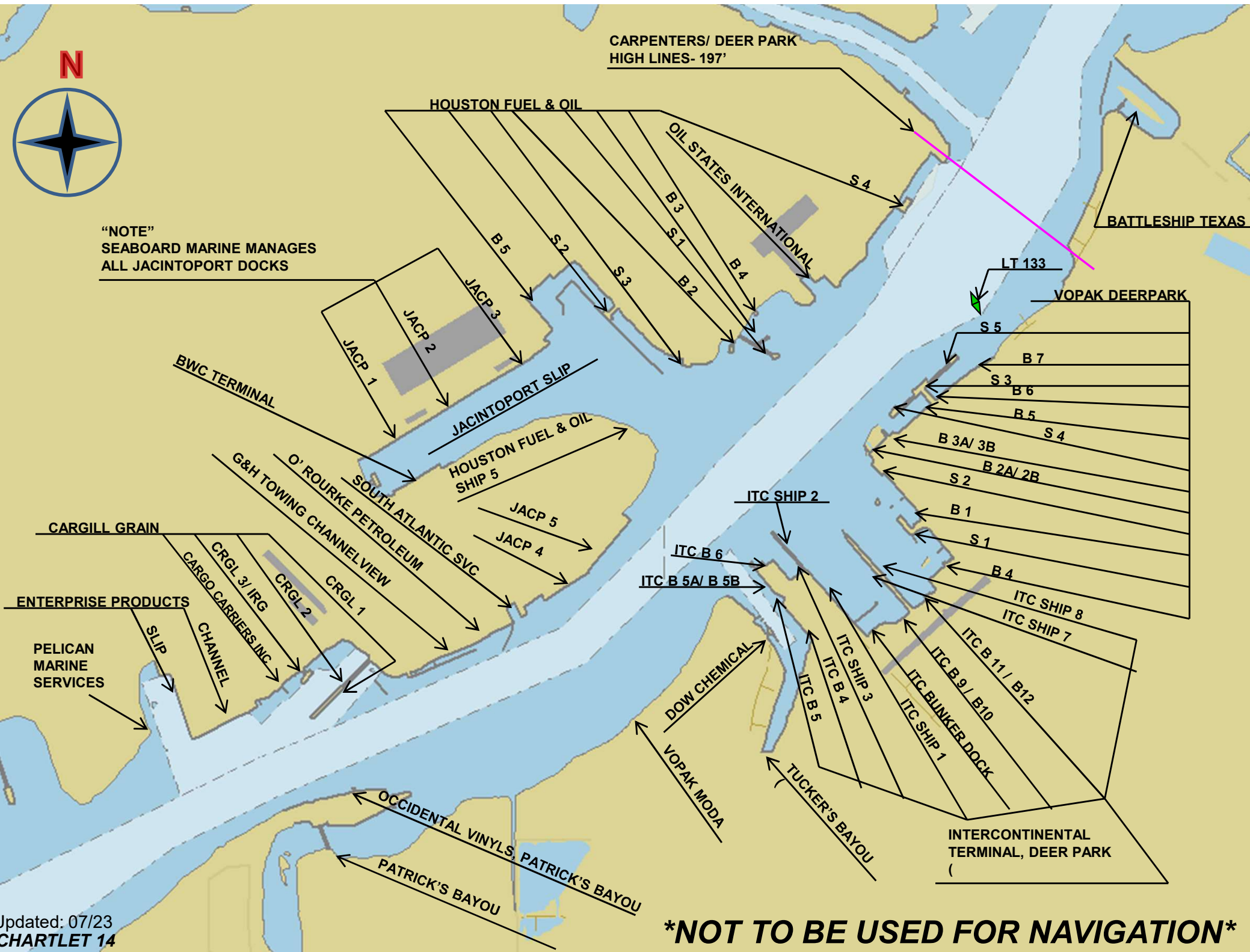
Updated: 07/23
CHARTLET 13



CARPENTERS/ DEER PARK
HIGH LINES- 197'

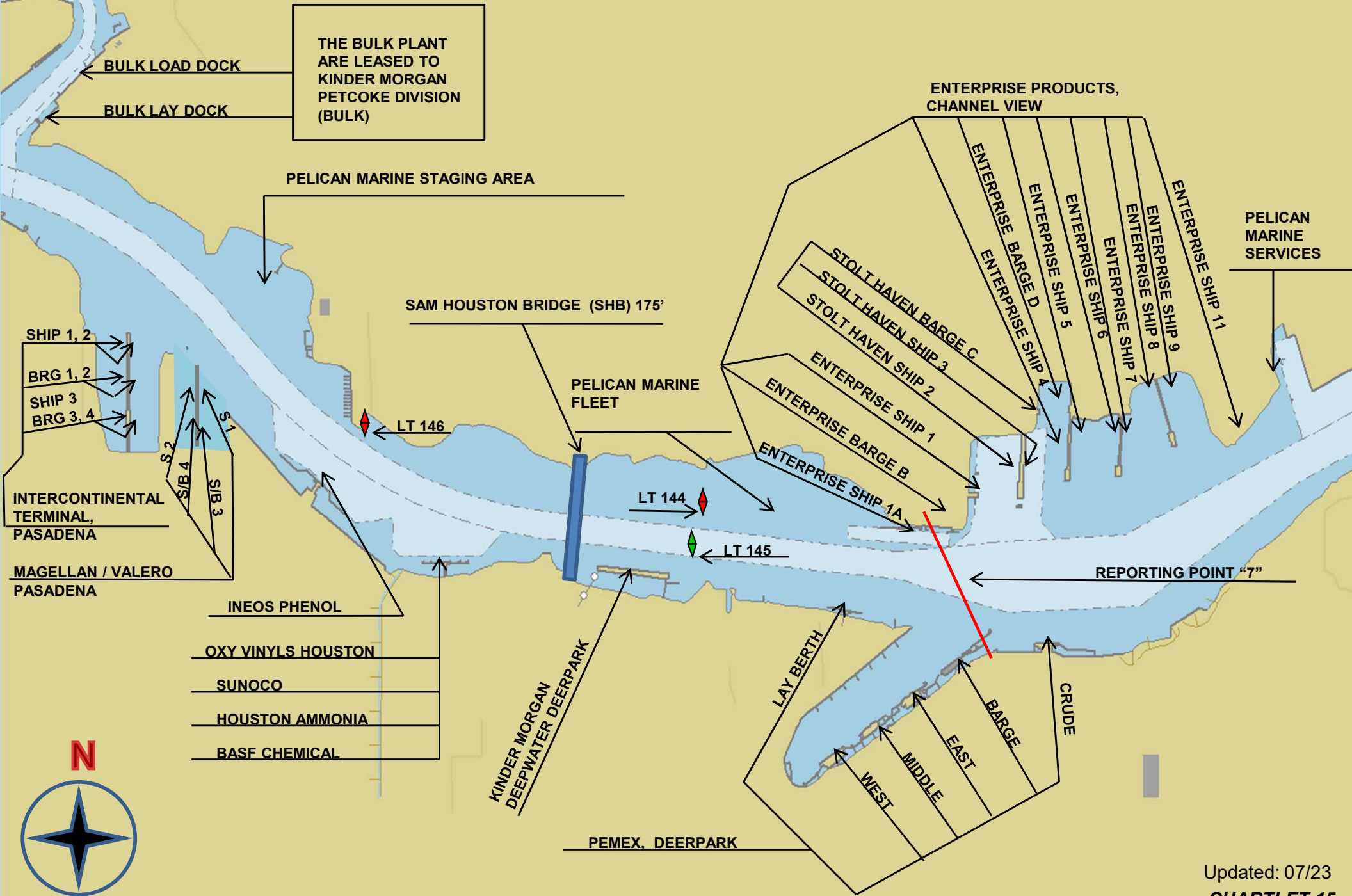
BATTLESHIP TEXAS

“NOTE”
SEABOARD MARINE MANAGES
ALL JACINTOPORT DOCKS



NOT TO BE USED FOR NAVIGATION

CHANNELVIEW



N

***NOT TO BE USED
FOR NAVIGATION***



CHANNEL REFINING
MERISOL
ALTIVIA
WOMBLE
GREENSPORT, GREENS BAYOU

GREENS BAYOU FLEETING

C SLIP

B SLIP

SPITZER INDUSTRIES

GREENS BAYOU PIPE MILL A SLIP

GREENS BAYOU

INDUSTRIAL TERMINALS EAST BULKHEAD

SOUTH CENTRAL CEMENT

KAVANAGH DOCK
VULCAN MATERIALS

SHIP 2

SHIP 1

INDUSTRIAL TERMINALS DOCK 1

EAST
WEST

KINDER MORGAN NORTH

GREENSPORT

SHIP 1

SHIP 2

SHIP 3

SHIP 4

SHIP 5

LT 152

GREENSPORT
BARGE DOCK (

REPORTING POINT "8"

CHEVRON-PHILLIPS
HOUSTON CHEMICAL COMPLEX
BARGE DOCK

TARGA PATRIOT STORAGE

ENTERPRISE PRODUCTS PASADENA

ETHYL

MEMC

ALBEMARLE

AMMONIA DOCK

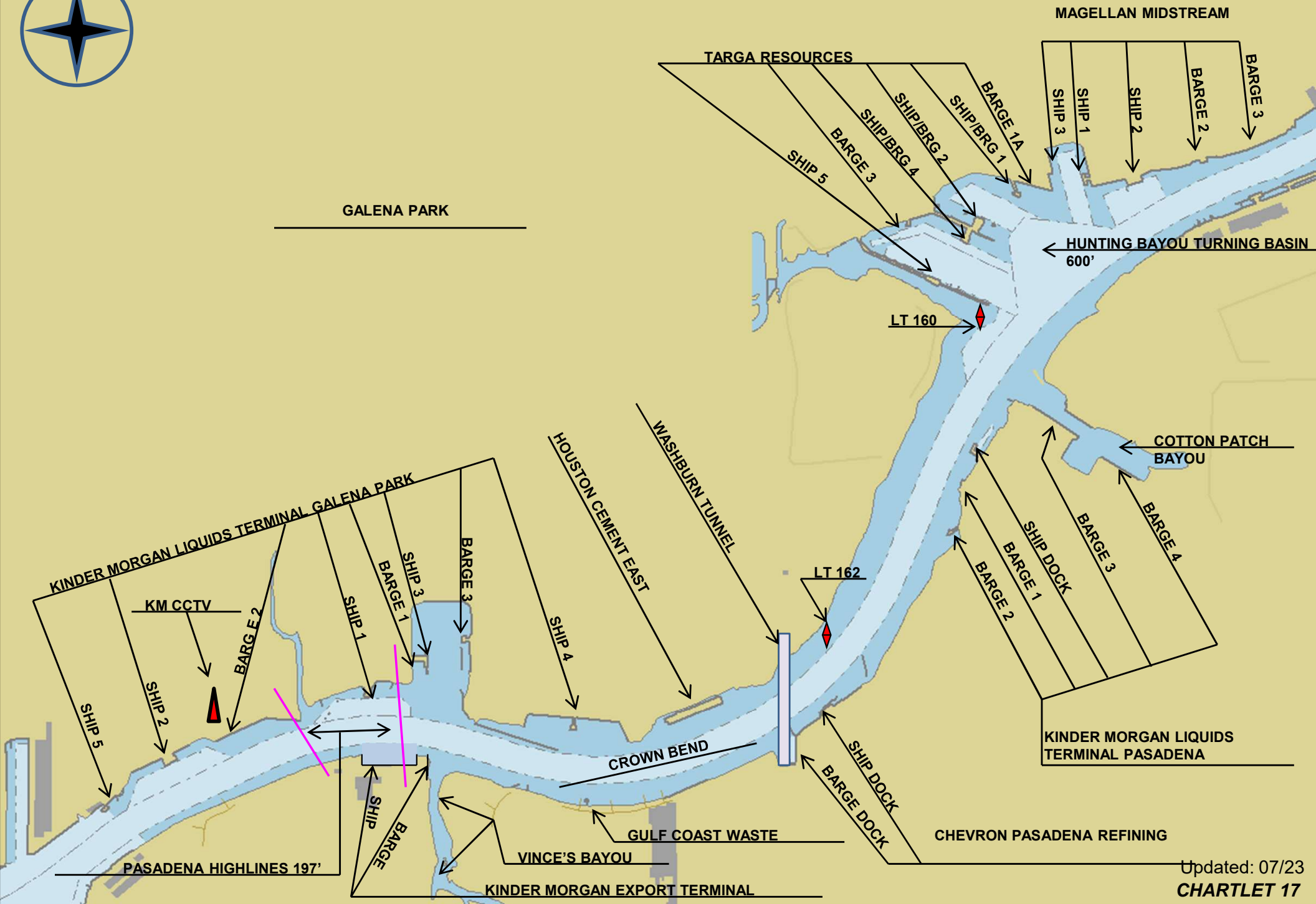
SHIP 2

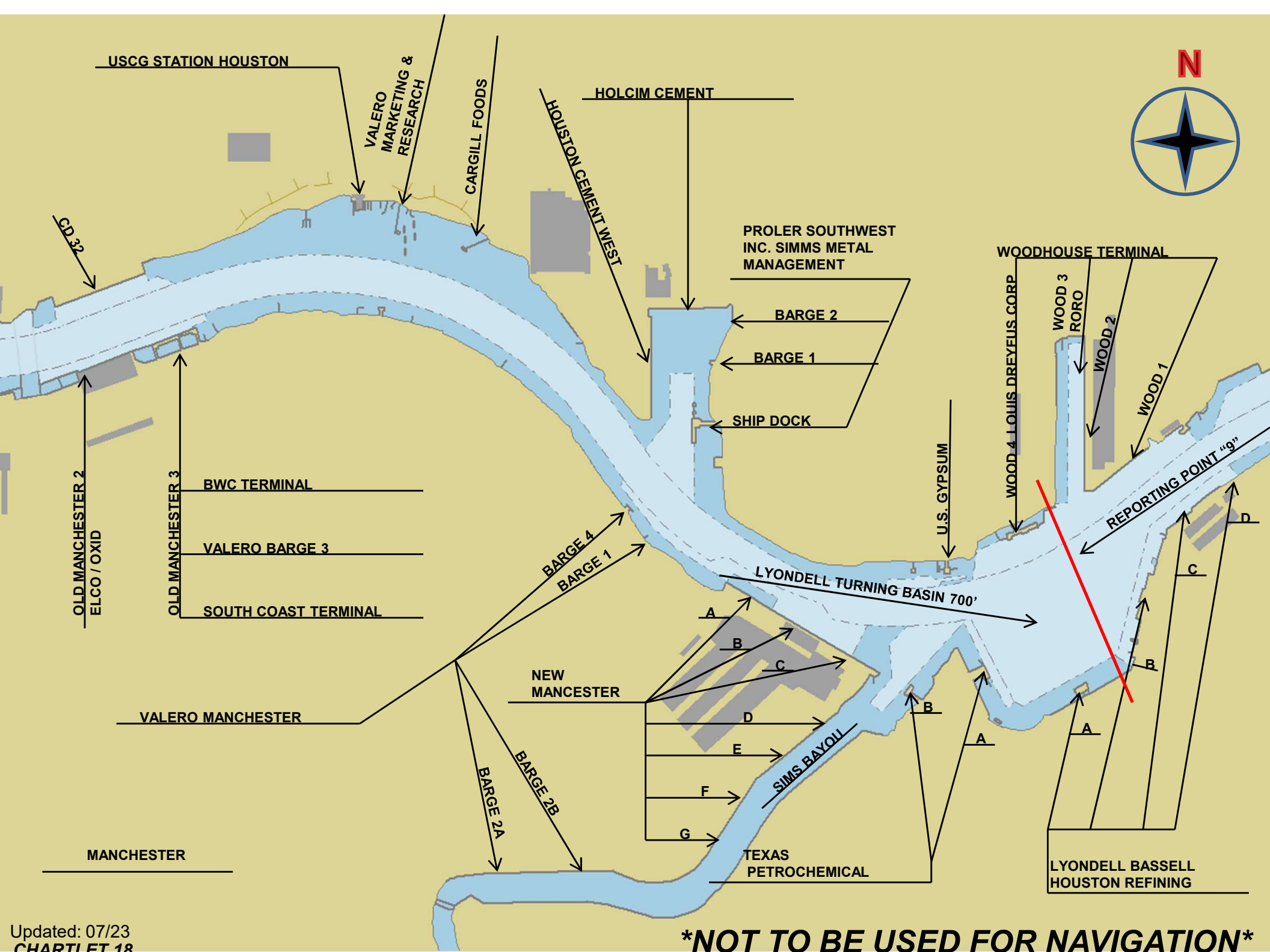
SHIP 1

PASADENA COMMODITIES INTERNATIONAL

ACID DOCK

NOT TO BE USED FOR NAVIGATION





NOT TO BE USED FOR NAVIGATION

